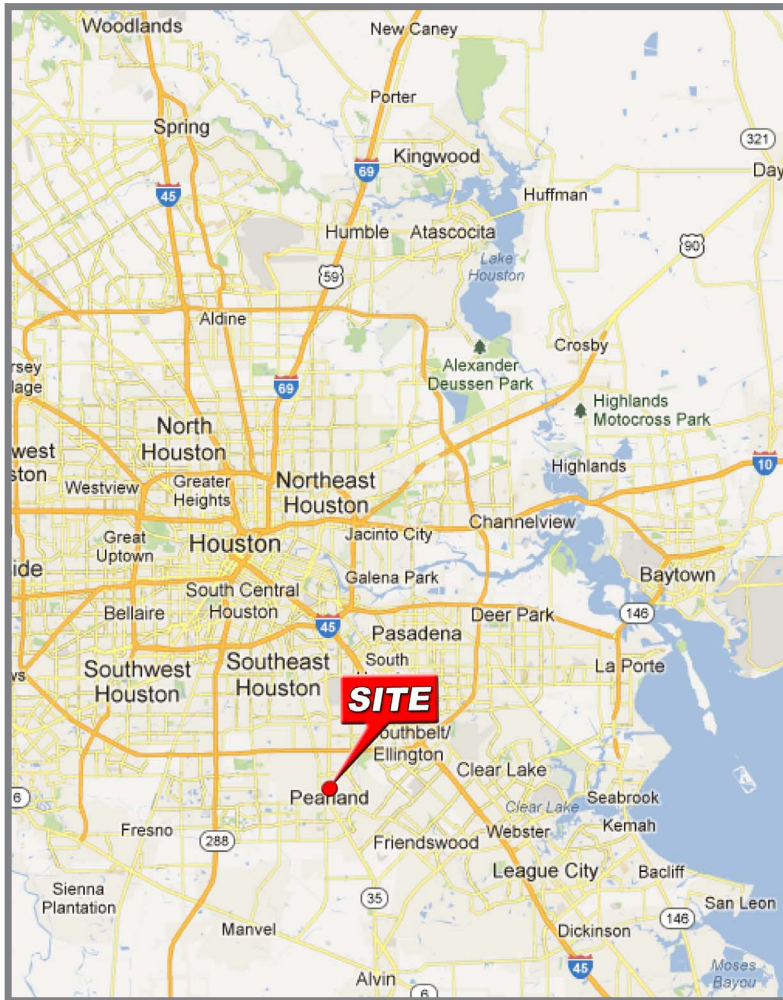


# PEARLAND SHOPPING CENTER

NWC of Hwy 35 & Orange St  
Pearland, Texas 77581



## Retail Space Available for Lease

### PROPERTY HIGHLIGHTS:

- Well anchored shopping center located in the heart of Pearland
- Center provides great exposure of Hwy 35 and convenient access to Beltway 8
- Construction for the widening/improvement of Hwy 35 is now complete
- 1,800 SF end cap available

### DEMOGRAPHIC SNAPSHOT: 1 mile 3 miles 5 miles

2013 Population	6,453	55,848	164,472
2013 Households	2,304	18,385	53,840
Average HH Income	\$81,652	\$86,364	\$83,294

### AREA RETAILERS:



### RETAIL PROPERTIES GROUP

4635 Southwest Fwy. | Houston, TX 77027  
(713) 784-6404 | retailpropertiesgroup.com

# PEARLAND SHOPPING CENTER

NWC of Hwy 35 & Orange St  
Pearland, Texas 77581



TENANT	SF
Office Depot	18,400
Big Lots	26,600
Dollar General	8,640
Ace Cash Express	1,200
Fred Loya Insurance	1,800
Instant Tax Service	900

TENANT	SF
Lee's Nails	900
Village Pizza & Seafood	1,800
High Security Lock & Safe	1,800
Pearland Vision	1,800
<b>AVAILABLE</b>	<b>1,800</b>

## RETAIL PROPERTIES GROUP

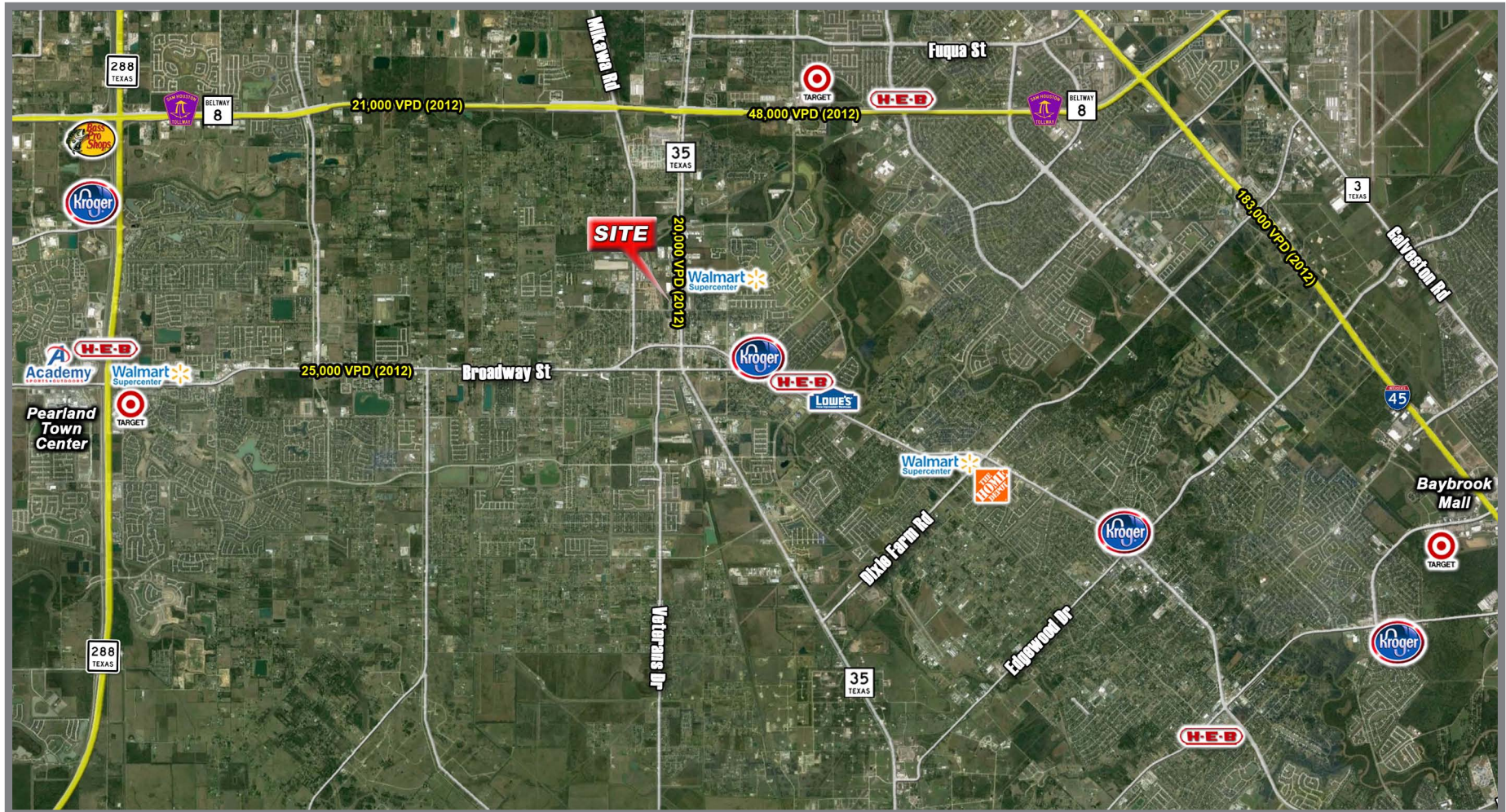
4635 Southwest Fwy. | Houston, TX 77027  
(713) 784-6404 | retailpropertiesgroup.com



# PEARLAND SHOPPING CENTER

NWC of Hwy 35 & Orange St

Pearland, Texas 77581



## RETAIL PROPERTIES GROUP

4635 Southwest Fwy. | Houston, TX 77027

(713) 784-6404 | [retailpropertiesgroup.com](http://retailpropertiesgroup.com)

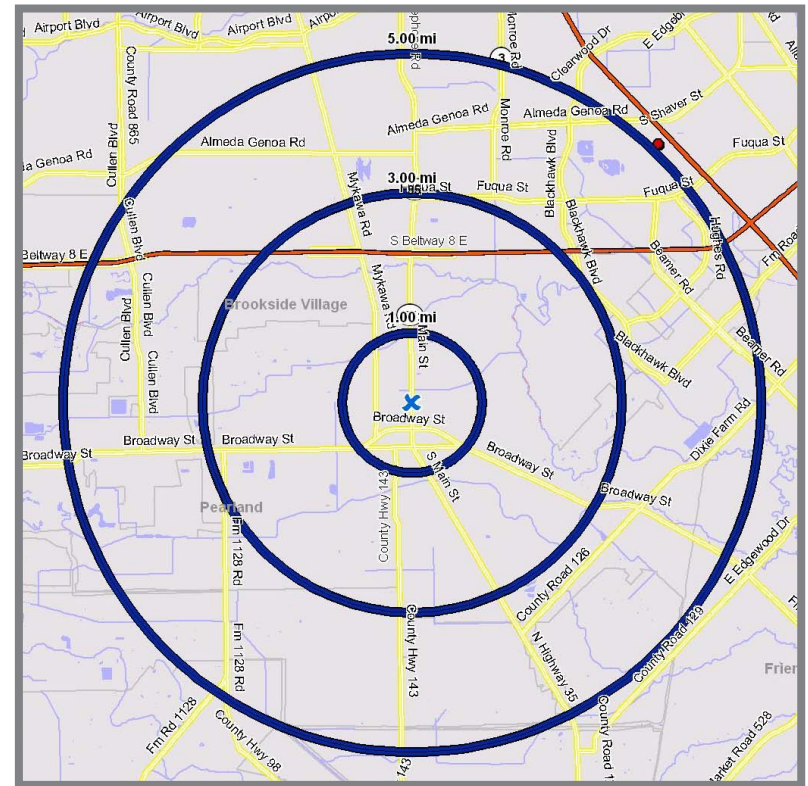


# PEARLAND SHOPPING CENTER

NWC of Hwy 35 & Orange St  
Pearland, Texas 77581



	1 MILE RING 3.14 SQ/MI	3 MILE RING 28.27 SQ/MI	5 MILE RING 78.53 SQ/MI
<b>POPULATION</b>			
2000 Population	4,400	32,472	106,708
2010 Population	6,290	53,703	158,292
2013 Population	6,453	55,848	164,472
% Growth 2000 - 2010	30.1%	39.5%	32.6%
% Growth 2013 - 2018	7.0%	8.7%	9.0%
<b>HOUSEHOLDS</b>			
2013 Households	2,304	18,385	53,840
Avg Household Size	2.8	3.0	3.1
<b>EMPLOYMENT</b>			
2013 Total Employers	232	882	2,239
2013 Workplace Employees	3,410	13,143	38,205
<b>RACE</b>			
% White	54.1%	45.5%	37.8%
% Hispanic	27.8%	32.3%	37.0%
% Black	9.1%	12.8%	14.9%
% Asian	6.6%	7.5%	8.5%
% Other	2.4%	1.9%	1.8%
White	3,492	25,436	62,150
Hispanic	1,791	18,024	60,878
Black	590	7,141	24,457
Asian	425	4,196	14,055
Other	156	1,051	2,932
<b>HOUSING</b>			
% Renter Occupied Housing Units	28.6%	21.8%	24.8%
% Owner Occupied Housing Units	71.4%	78.2%	75.2%
Median Home Value	\$151,734	\$150,258	\$143,934
<b>INCOME</b>			
2013 Median Household Income	\$73,125	\$76,429	\$73,783
2013 Average Household Income	\$81,652	\$86,364	\$83,294
2013 Per Capita Income	\$29,557	\$28,497	\$27,320
<b>AGE</b>			
Median Age	30.4	30.0	30.0



## RETAIL PROPERTIES GROUP

4635 Southwest Fwy. | Houston, TX 77027  
(713) 784-6404 | retailpropertiesgroup.com